

M Series™ Arms with Slide-In Mounting Plate

FIXED HEIGHT ARMS



Fixed-height arms offering tilt, swivel, pivot, and a variety of front-end device interfaces and back-end mounting interfaces.

- Offers a pivot point at the wall channel for lateral adjustability and swivel adjustment
- Features range of motion from flush to full extension, and cable management
- Tilt Mechanism Maximum Load: 30 lbs/13.6 kg

8" / 20.3 cm M Series Pivot Arm with Slide-In Mounting Plate

WMM-0002-01

- Product Weight: 3.0 lb / 1.4 kg
- Total Arm Maximum Load: 60 lbs/27.2 kg
- Maximum Device Weight: 30 lbs/13.6 kg

12" / 30.5 cm M Series Pivot Arm with Slide-In Mounting Plate

WMM-0002-02

- Product Weight: 3.3 lb / 1.5 kg
- Total Arm Maximum Load: 60 lbs/27.2 kg
- Maximum Device Weight: 30 lbs/13.6 kg

16" / 40.6 cm M Series Pivot Arm with Slide-In Mounting Plate

WMM-0002-03

- Product Weight: 3.6 lb / 1.6 kg
- Total Arm Maximum Load: 50 lbs/22.7 kg
- Maximum Device Weight: 30 lbs/13.6 kg

8 x 8" / 20.3 x 20.3 cm M Series Articulating Arm with Slide-In Mounting Plate

WMM-0002-05

- Product Weight: 4.5 lb / 2.0 kg
- Total Arm Maximum Load: 30 lbs/13.6 kg

12 x 12" / 30.5 x 30.5 cm M Series Articulating Arm with Slide-In Mounting Plate

WMM-0002-06

- Product Weight: 4.7 lb / 2.1 kg
- Total Arm Maximum Load: 30 lbs/13.6 kg



8" / 20.3 CM PIVOT ARM



12" / 30.5 CM PIVOT ARM



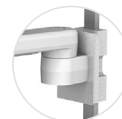
16" / 40.6 CM PIVOT ARM



8 X 8" / 20.3 X 20.3 CM ARTICULATING ARM



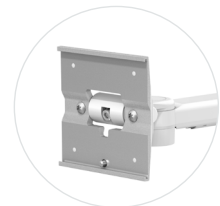
12 X 12" / 30.5 X 30.5 CM ARTICULATING ARM



BACK-END MOUNTING INTERFACES



HORIZONTAL POSITIONED MOUNTING PLATE
LATERAL RANGE OF MOTION



VERTICAL POSITIONED MOUNTING PLATE
LATERAL RANGE OF MOTION

