

Installation Guide

Upgrade Kit – Modification of M-Series Arm for Track Mounting on Side of Dräger Apollo

The purpose of this installation guide is to:

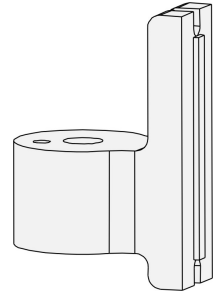
1. Describe the procedure for performing the upgrade.
2. Describe mounting of the M-Series Arm in the accessory track.

Parts Reference

The following parts and hardware are included with this installation kit:

Item #	Description	Qty
1	Track Pivot, Dräger	1
2	Nut Plate	2
3	M6 x 22mm Flat Head Socket Cap Screw (FHSCS)	2
4	5/32" Hex Wrench	1

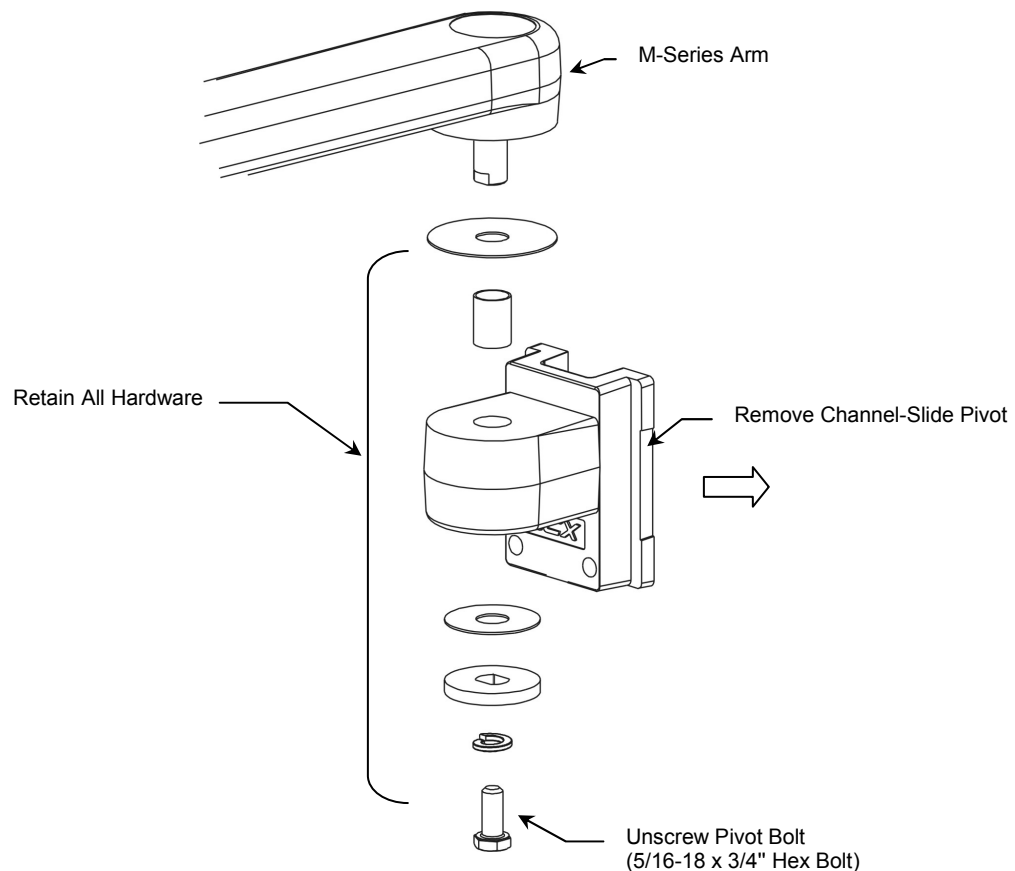
Dräger Track Pivot



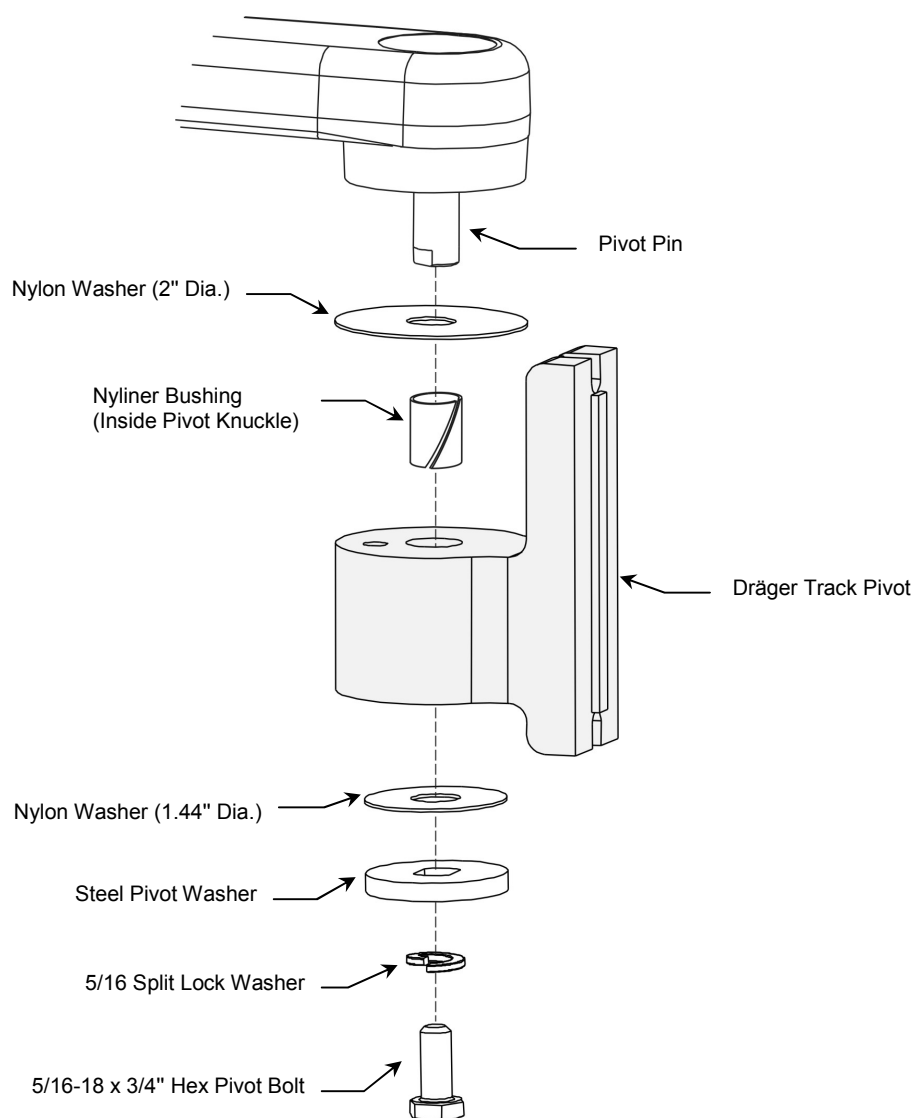
Tools Required: 1/2" [13mm] socket wrench (not provided), 5/32" hex wrench (provided).

Performing the Upgrade

1. Using a 1/2" [13mm] socket wrench, unscrew the pivot bolt and carefully remove the existing swivel head and associated hardware shown. **Do not discard this hardware** – it will be used for assembling the new track-mounting Slide.

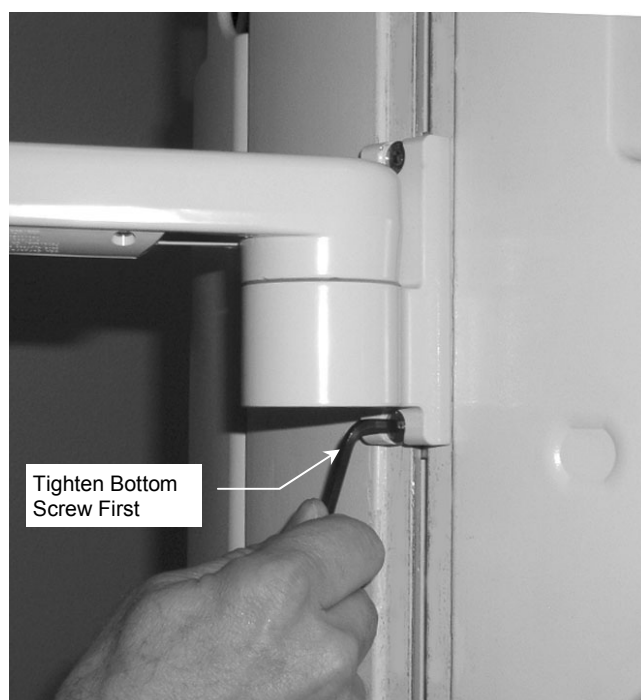
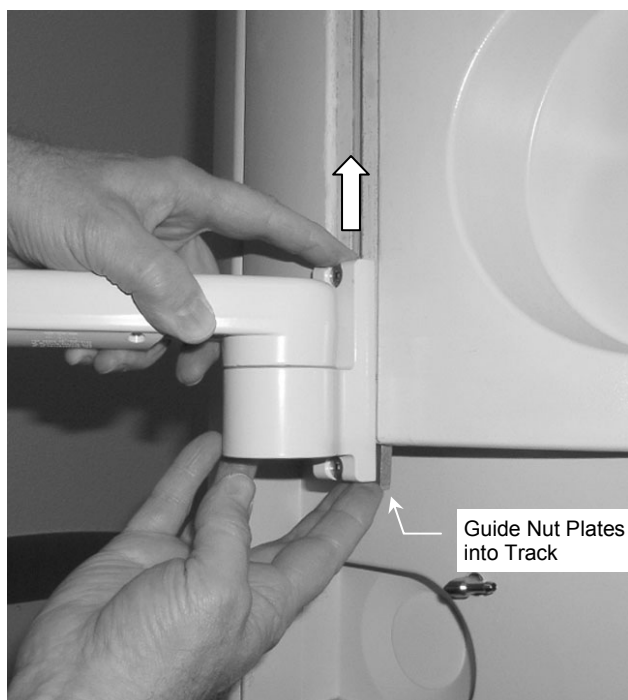
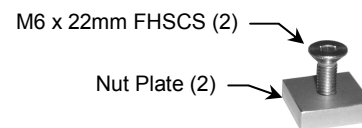


2. Install the Dräger Track Pivot on the Pivot Pin as shown below. Using a 1/2" socket, tighten Pivot Bolt to desired pivot tension.



Mounting the Arm in the Accessory Track

1. Thread one (1) M6 x 22mm FHSCS a few turns into each Nut Plate, leaving 15 mm of thread exposed per screw (right).
2. Insert Nut Plate/screw assemblies in top and bottom slots, holding the bottom screw in place to prevent it from falling out of the slot (right).
3. While holding bottom Nut Plate in position (below left), guide both Nut Plates into the track and move entire assembly up the track to the desired mounting position.
4. Using the 5/32" hex wrench provided, tighten bottom screw first, then top screw (below right).



5. To adjust height of Arm in track, loosen the two (2) FHSCS, move the arm, and re-tighten screws.